

BE3 Sewer Lines



1/22/2026

◆ Manholes

Sewerlines

➤ SEWERMAIN

World Imagery

Low Resolution 15m Imagery

High Resolution 60cm Imagery

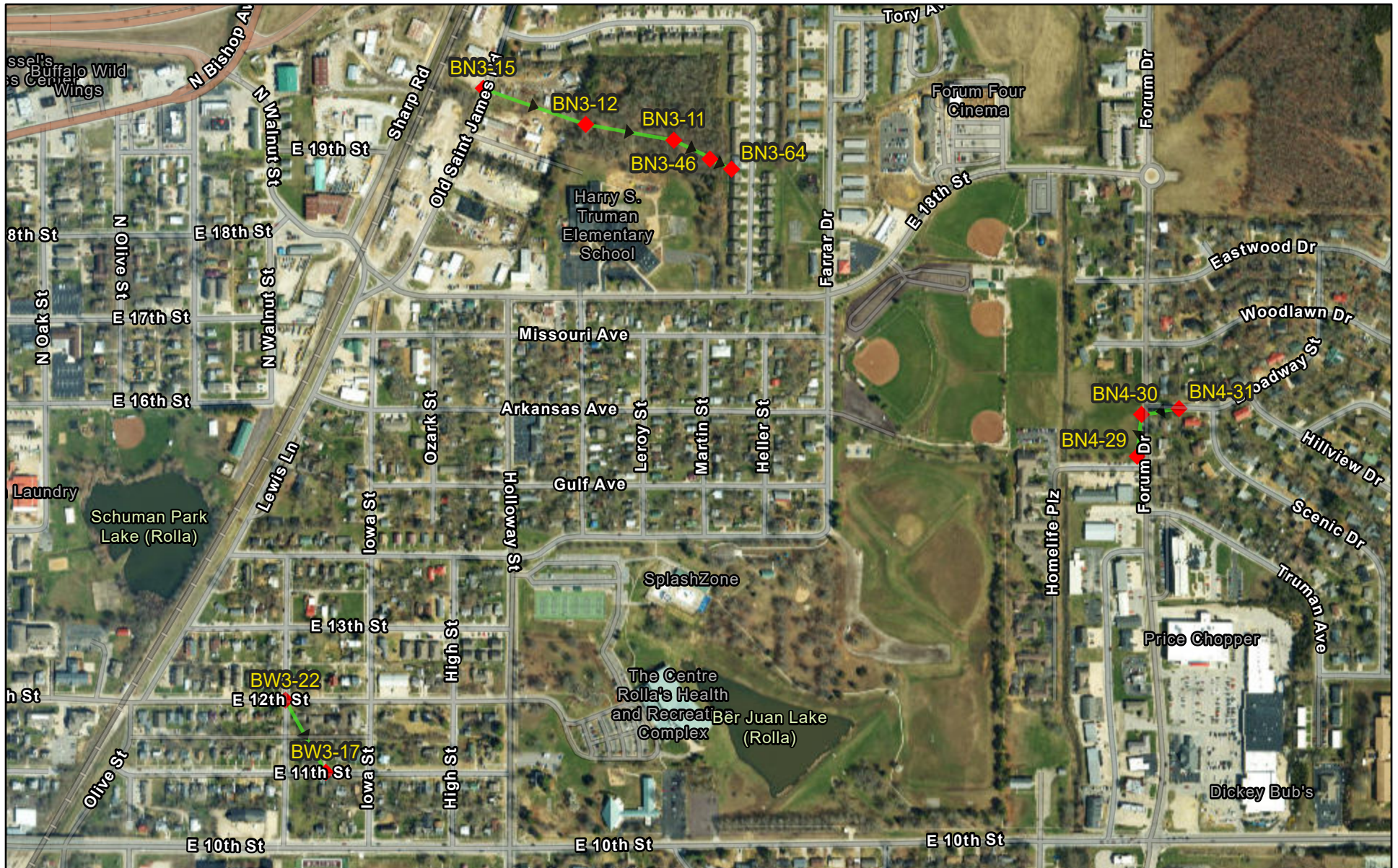
High Resolution 30cm Imagery

Citations

60cm Resolution Metadata

Source: Esri, Vantor, Earthstar Geographics, and the GIS User Community,
Sources: Esri, TomTom, Garmin, FAO, NOAA, USGS, © OpenStreetMap

BN3, BN4 & BW3 Sewer Lines



1/22/2026

- ◆ Manholes
- Sewerlines
- ➔ SEWERMAIN

World Imagery
 Low Resolution 15m Imagery
 High Resolution 60cm Imagery

High Resolution 30cm Imagery
 Citations
 2.4m Resolution Metadata

Source: Esri, Vantor, Earthstar Geographics, and the GIS User Community,
 Sources: Esri, TomTom, Garmin, FAO, NOAA, USGS, © OpenStreetMap

LE3 & LE1 Sewer Lines



1/22/2026

◆ Manholes

World Imagery

High Resolution 30cm Imagery

Sewerlines

Low Resolution 15m Imagery

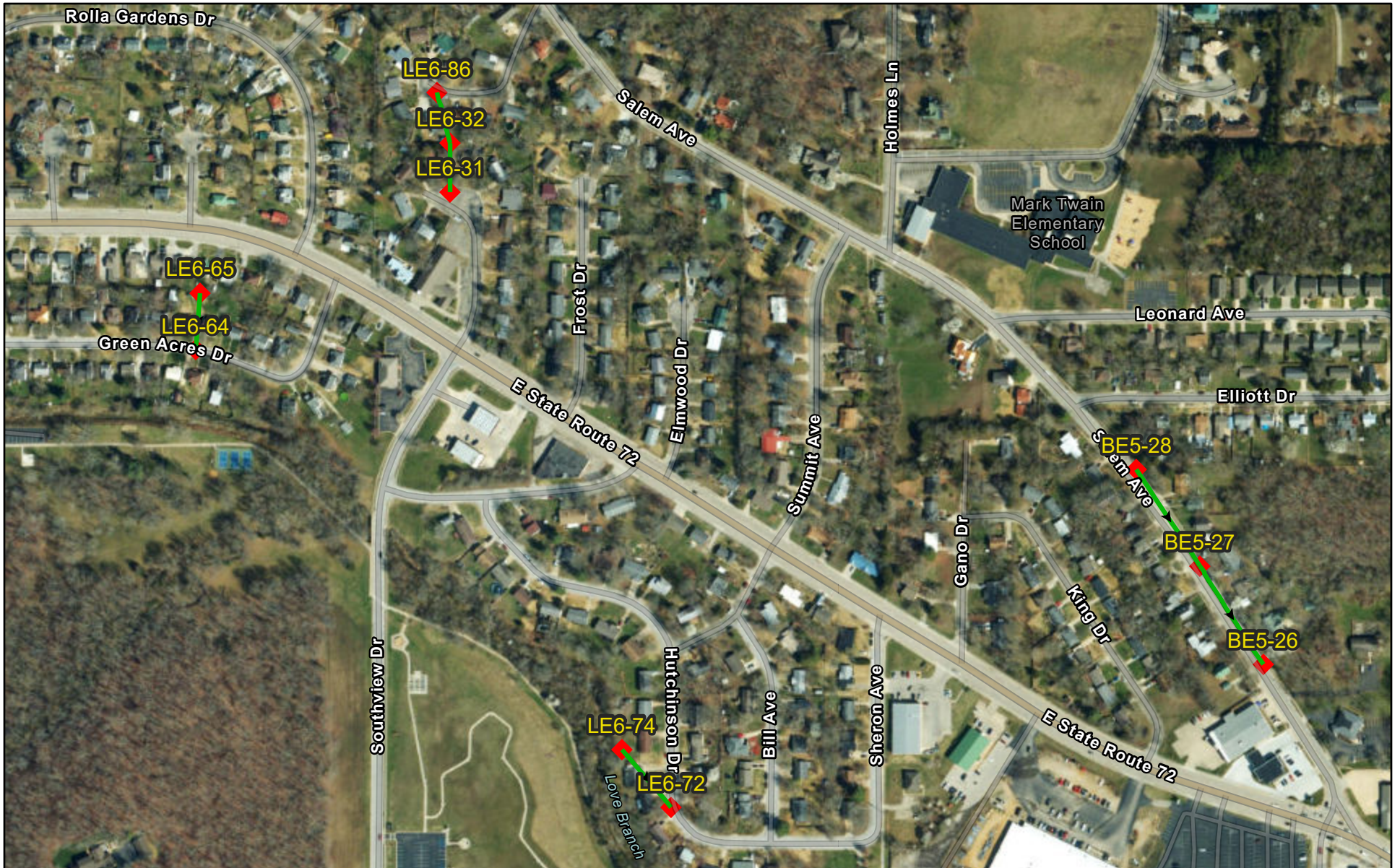
Citations

→ SEWERMAIN

High Resolution 60cm Imagery

Source: Esri, Vantor, Earthstar Geographics, and the GIS User Community,
Sources: Esri, TomTom, Garmin, FAO, NOAA, USGS, © OpenStreetMap

LE6 & BE5 Sewer Lines



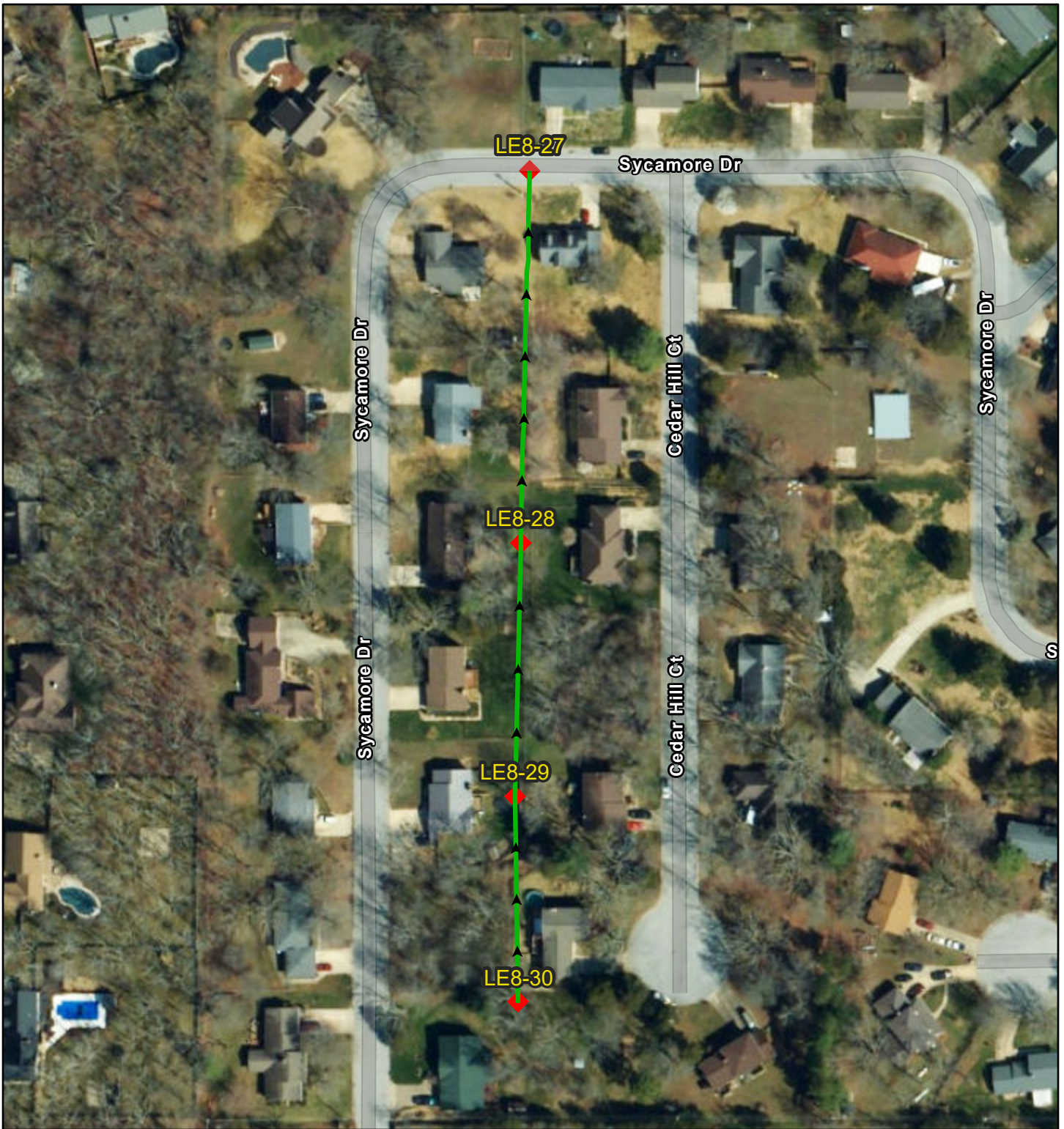
2/3/2026

- Address Points
- World Imagery
- Sewerlines
- Low Resolution 15m Imagery
- High Resolution 60cm Imagery
- High Resolution 30cm Imagery
- SEWERMAIN
- Manholes

- Citations
- 1.2m Resolution Metadata

Source: Esri, Vantor, Earthstar Geographics, and the GIS User Community, Sources: Esri, TomTom, Garmin, FAO, NOAA, USGS, © OpenStreetMap

LE8 Sewer Lines



2/3/2026

- Address Points
- Sewerlines
- SEWERMAIN
- Manholes
- World Imagery

- Low Resolution 15m Imagery
- High Resolution 60cm Imagery
- High Resolution 30cm Imagery
- Citations

Source: Esri, Vantor, Earthstar Geographics, and the GIS User Community, Sources: Esri, TomTom, Garmin, FAO, NOAA, USGS, © OpenStreetMap contributors, and the GIS User Community

LN1 Sewer Lines



1/22/2026

◆ Manholes

Sewerlines

— SEWERMAIN

World Imagery

Low Resolution 15m Imagery

High Resolution 60cm Imagery

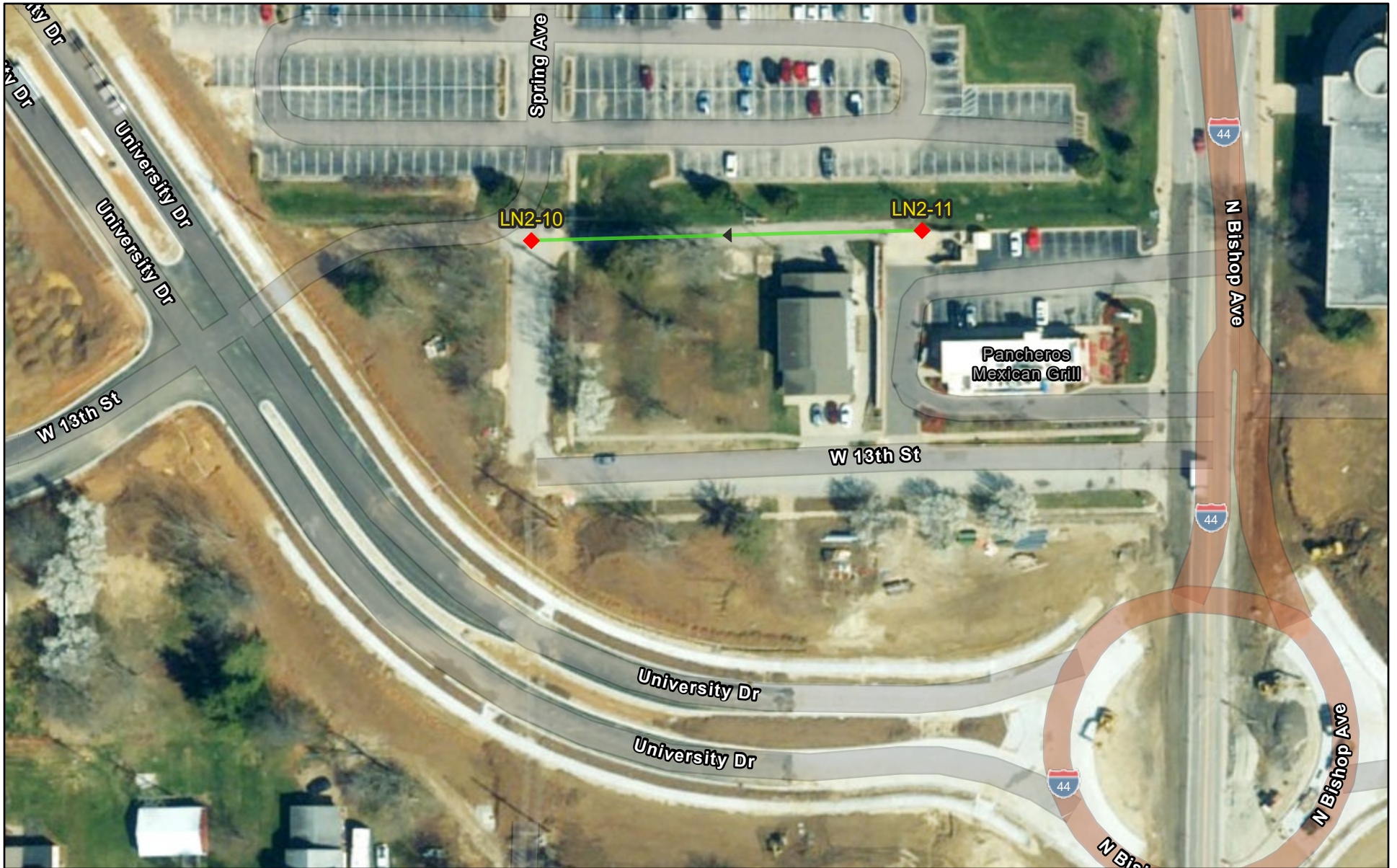
High Resolution 30cm Imagery

Citations

60cm Resolution Metadata

Source: Esri, Vantor, Earthstar Geographics, and the GIS User Community,
Sources: Esri, TomTom, Garmin, FAO, NOAA, USGS, © OpenStreetMap

LN2 Sewer Lines



1/26/2026

◆ Manholes

Sewerlines

— SEWERMAIN

World Imagery

Low Resolution 15m Imagery

High Resolution 60cm Imagery

High Resolution 30cm Imagery

Citations

30cm Resolution Metadata

Source: Esri, Vantor, Earthstar Geographics, and the GIS User Community,
Sources: Esri, TomTom, Garmin, FAO, NOAA, USGS, © OpenStreetMap

LW Sewer Lines



2/3/2026

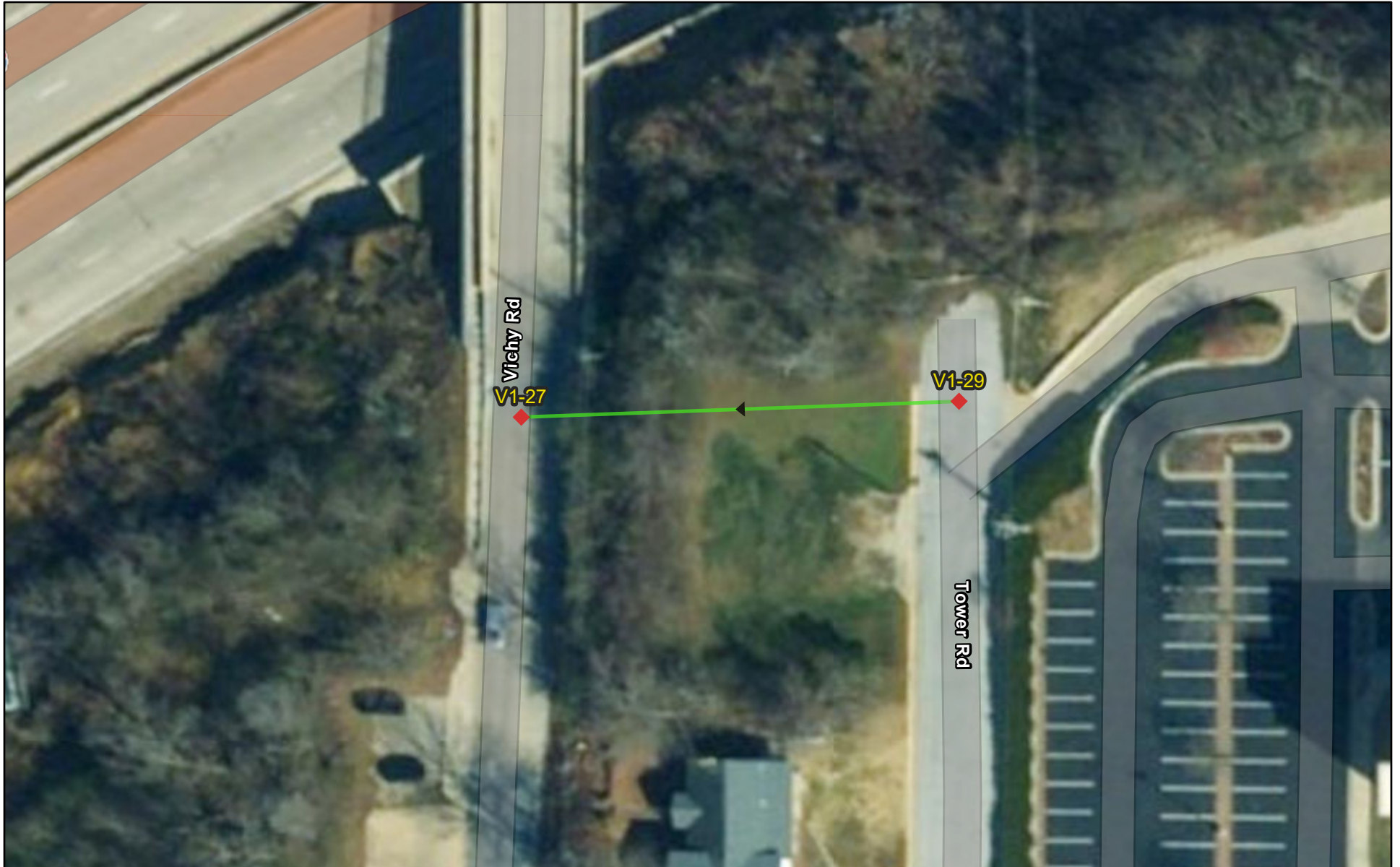
- Address Points
- Sewerlines
- SEWERMAIN
- Manholes

- World Imagery
- Low Resolution 15m Imagery
- High Resolution 60cm Imagery
- High Resolution 30cm Imagery

- Citations
- 60cm Resolution Metadata

Source: Esri, Vantor, Earthstar Geographics, and the GIS User Community,
Sources: Esri, TomTom, Garmin, FAO, NOAA, USGS, © OpenStreetMap

V1 Sewer Lines



1/22/2026

◆ Manholes

Sewerlines

— SEWERMAIN

World Imagery

Low Resolution 15m Imagery

High Resolution 60cm Imagery

High Resolution 30cm Imagery

Citations

Source: Esri, Vantor, Earthstar Geographics, and the GIS User Community,
Sources: Esri, TomTom, Garmin, FAO, NOAA, USGS, © OpenStreetMap

V3 Sewer Lines



1/22/2026

◆ Manholes

Sewerlines

— SEWERMAIN

World Imagery

Low Resolution 15m Imagery

High Resolution 60cm Imagery

High Resolution 30cm Imagery

Citations

Source: Esri, Vantor, Earthstar Geographics, and the GIS User Community,
Sources: Esri, TomTom, Garmin, FAO, NOAA, USGS, © OpenStreetMap